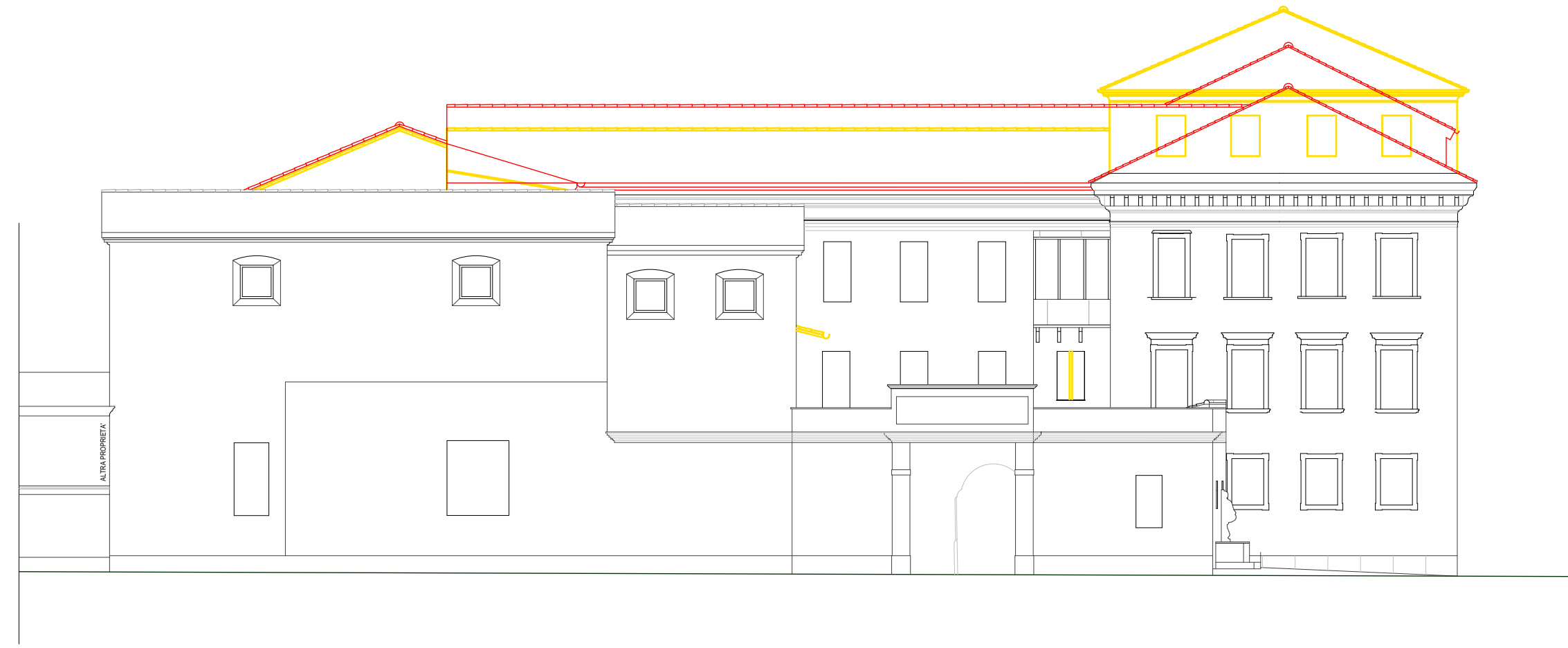
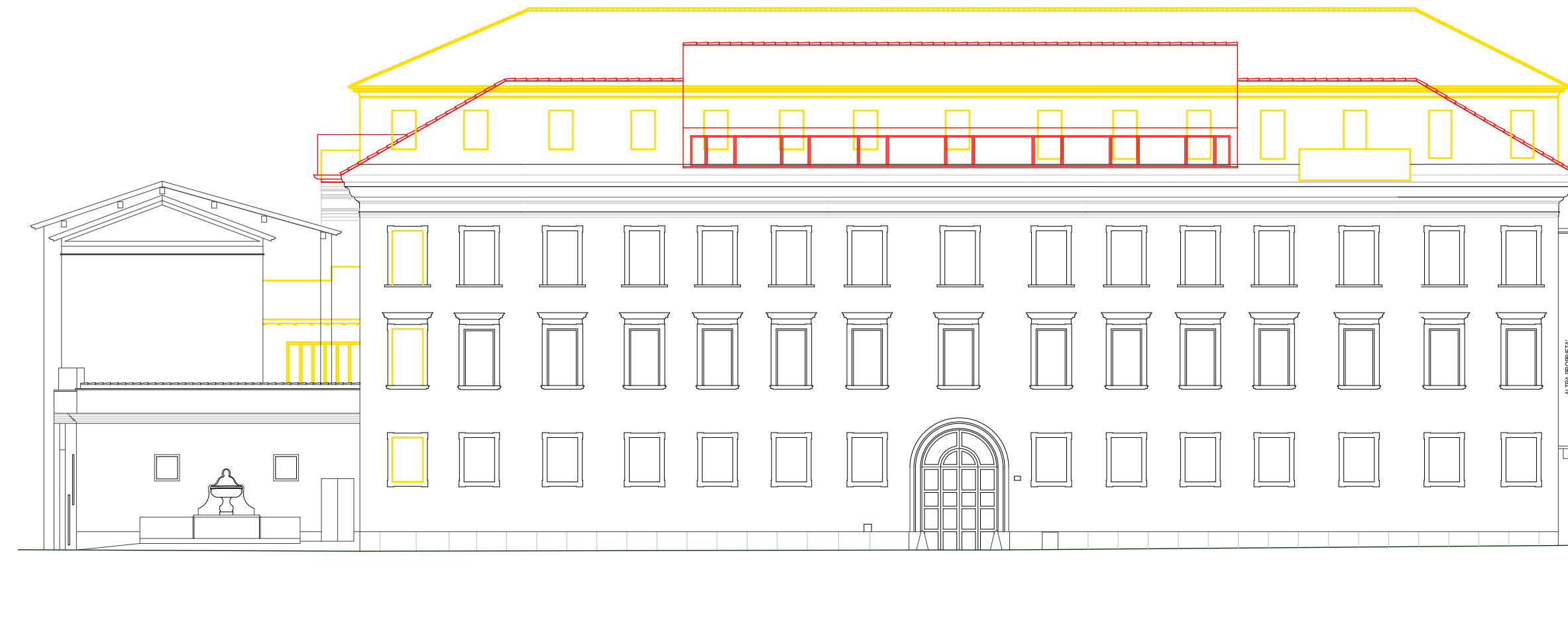


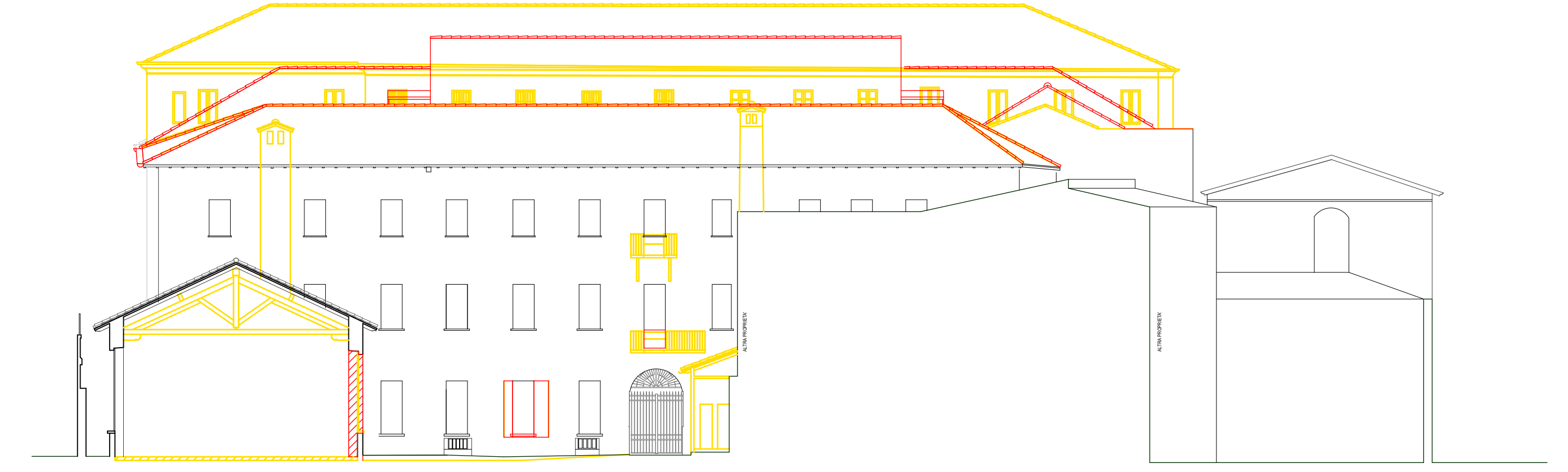
PROSPETTO SUD



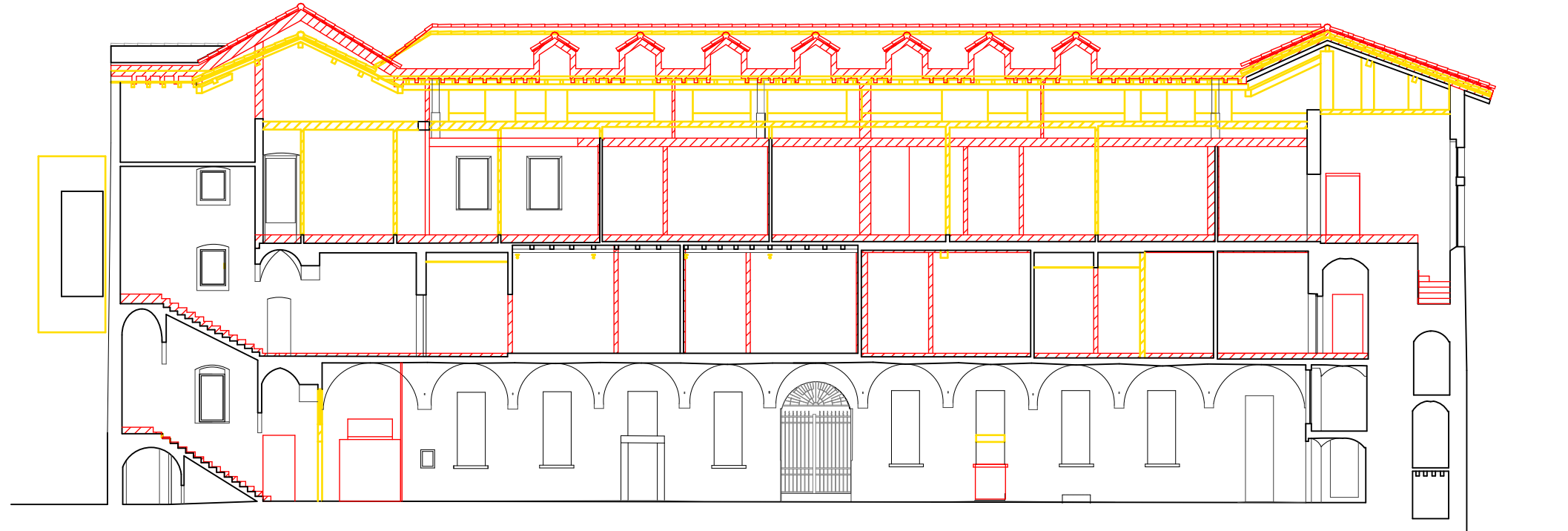
PROSPETTO EST



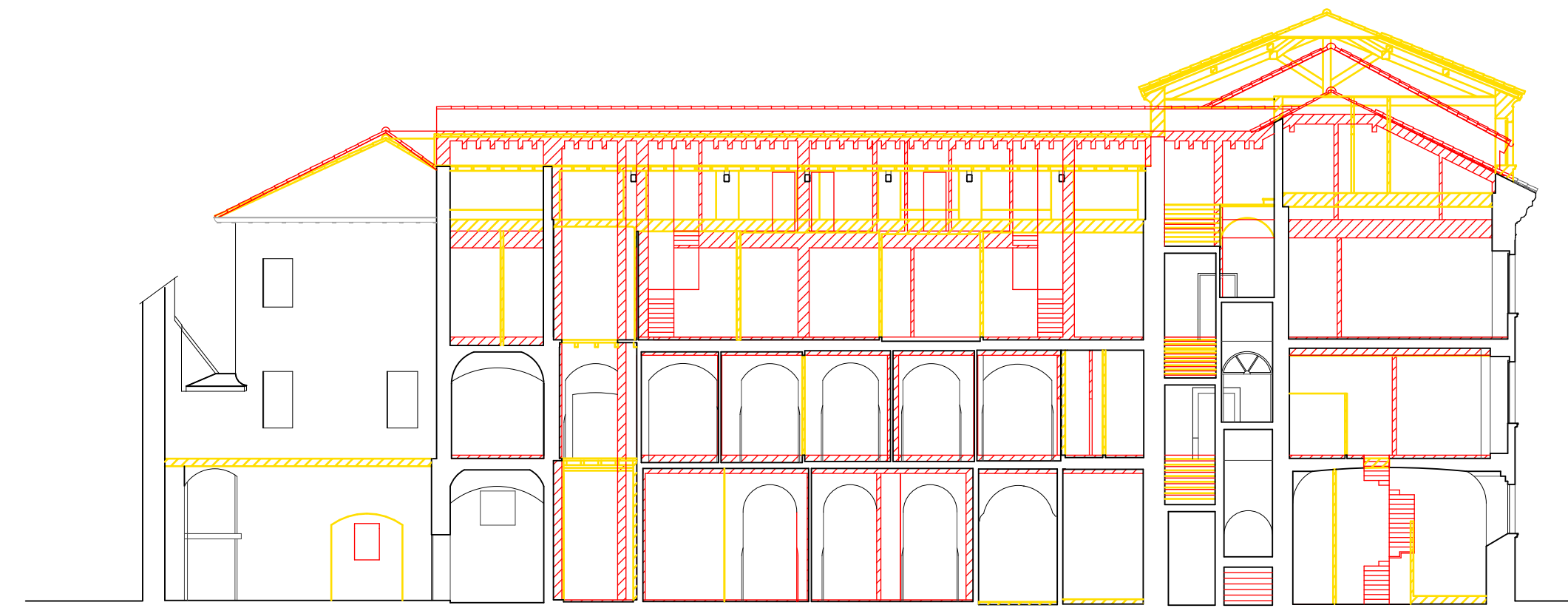
SEZIONE D



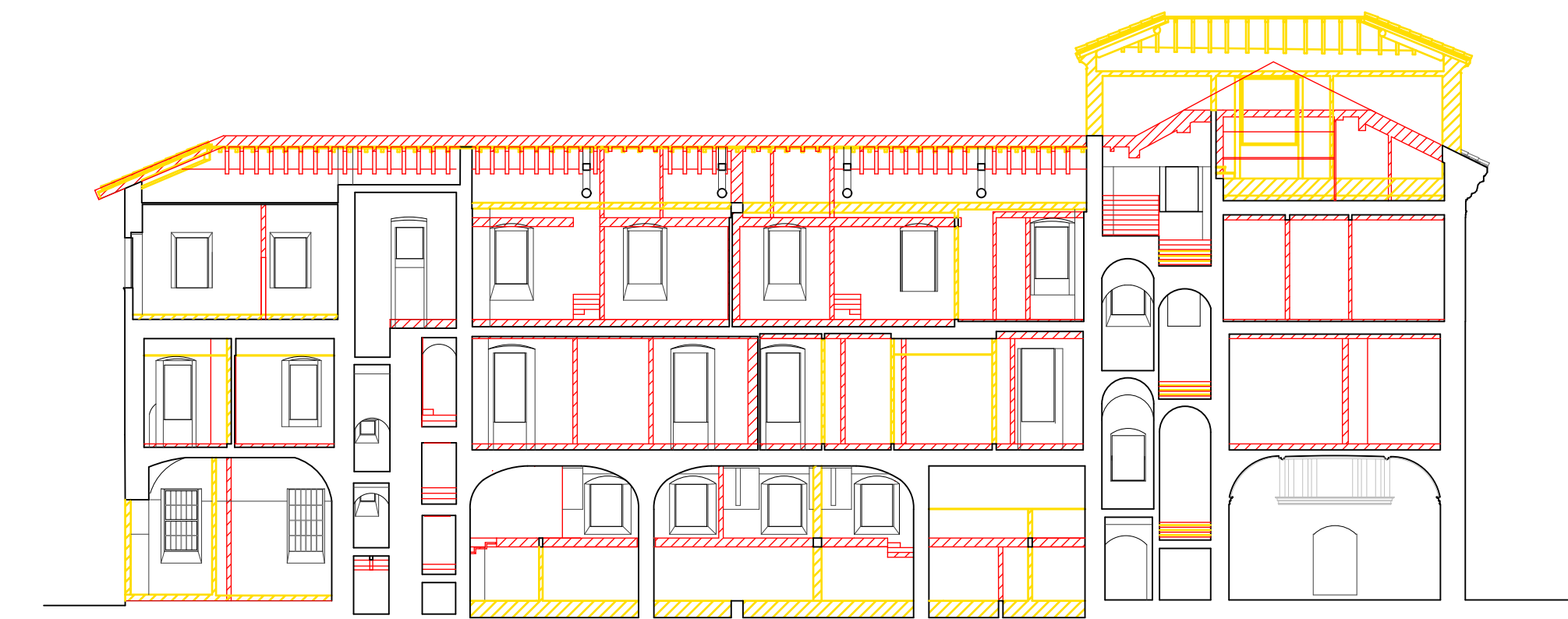
SEZIONE 8



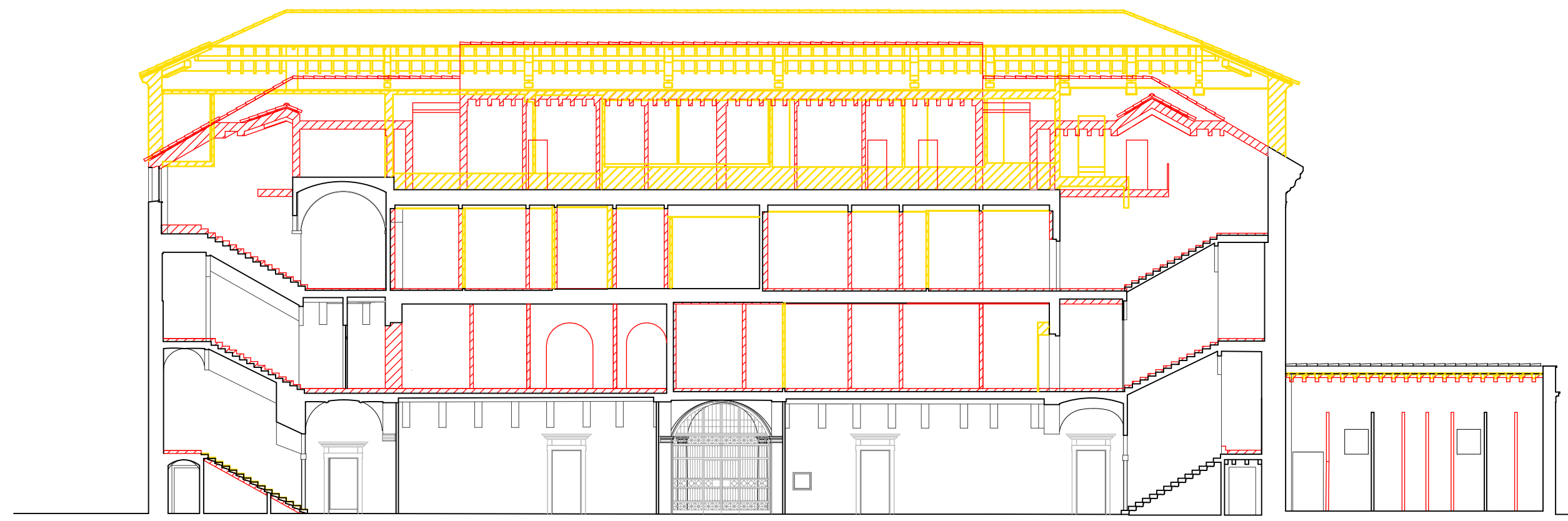
SEZIONE 5



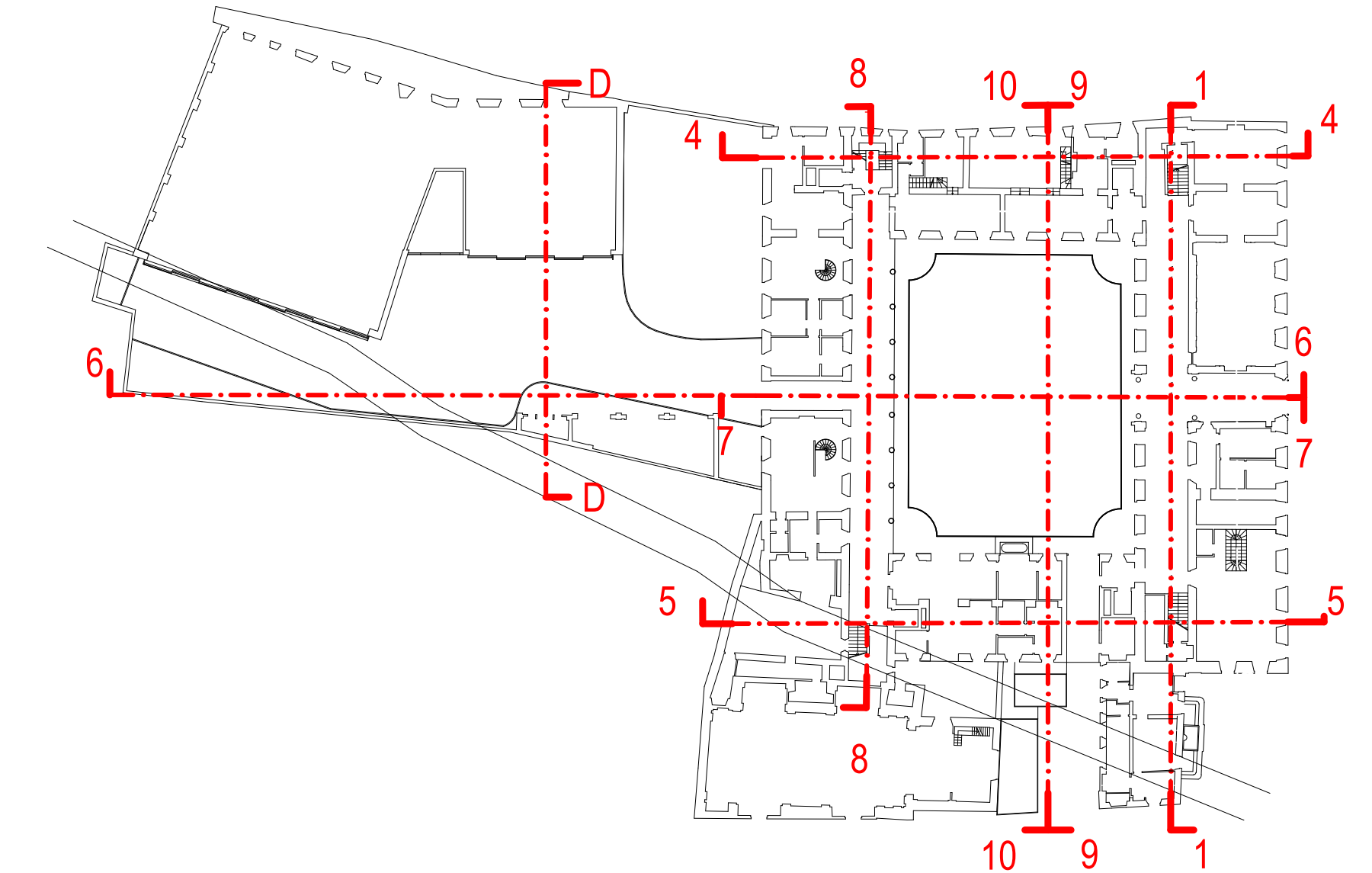
SEZIONE 4





SEZIONE 1



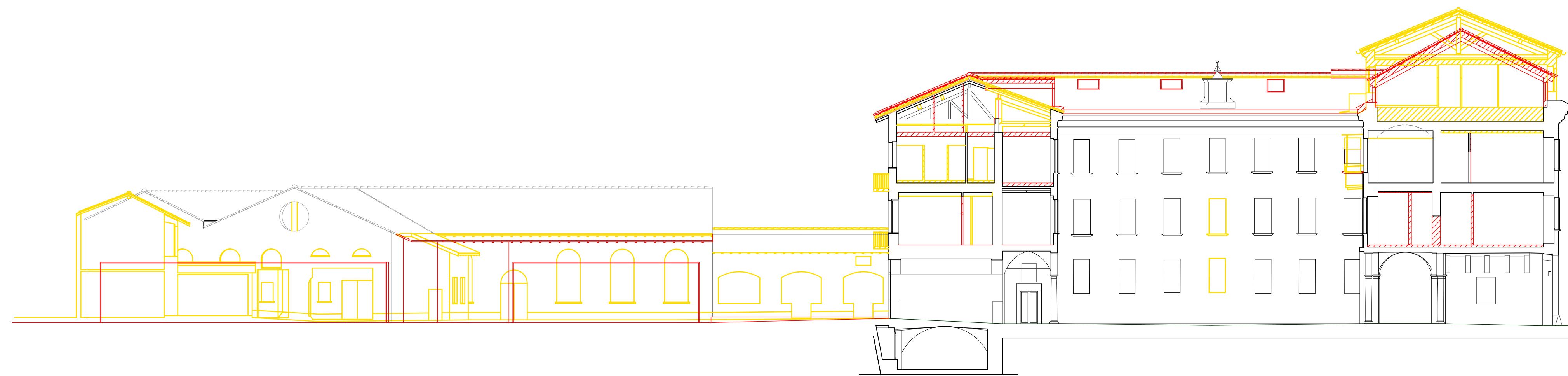
SEZIONE 7



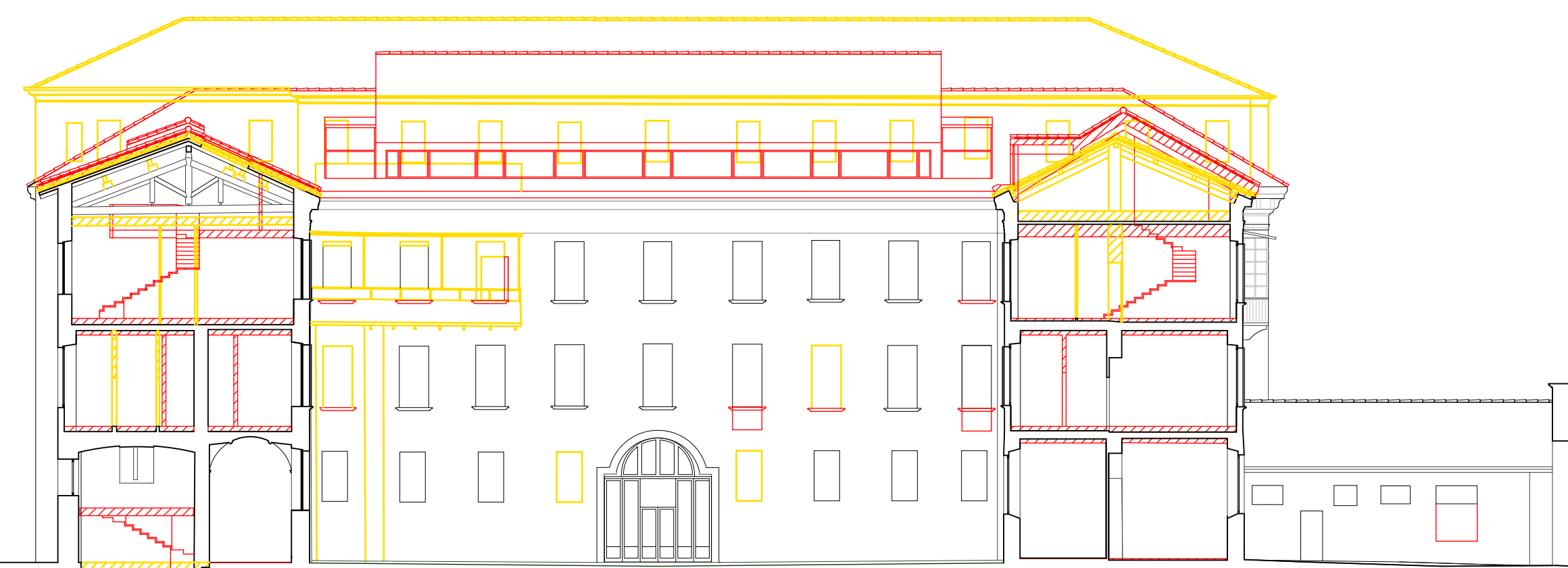
LEGENDA

-  DEMOLIZIONE
-  COSTRUZIONE

SEZIONE 6



SEZIONE 9



SEZIONE 10



Comune di Brescia  
h k h h to Speciale Area Centro - Prc3 EX CASERMA GNUTTI

Piano Attuativo ai sensi dell'art.14 L.R. 12/2005 e dell'art.82 delle N.T.A.del PGT

CONFRONTO  
Prospetti e Sezioni

scala: 1:200

Data: 29/10/2021  
Tavola

PROGETTAZIONE: **BOISCHETTI ASSOCIATI** - **BOISCHETTI ASSOCIATI**  
Via Venezia 10 - 25121 Brescia - P.IVA 0217340982  
Tel. +39 030 2101111 - Fax +39 030 2101112  
www.boischetti.it - www.boischetti.com

REDAZIONE: **ARER s.r.l.**  
Via Venezia 10 - 25121 Brescia - P.IVA 0217340982  
Tel. +39 030 2101111 - Fax +39 030 2101112  
www.arer.it - www.arer.com

Tutti i diritti di riproduzione e ristampa sono riservati  
codice 1132\_02\_111029\_C3