

Progettista

ARCHI²
[archisquare s.r.l.]

Sede operativa:

Via Massimo d'Azeglio, 23
25128 Brescia
T. +39 030 381610
F. +39 030382210
Info@archi2.it
archisquare@pec.it

Committente

THRE srl

Via Don Milani n° 60
25020 FLERO (BS)

Tel. +39 030 2540081
Cell. +39 348 2814608

Proprietà

THRE srl

Via Don Milani n° 60
25020 FLERO (BS)

Tel. +39 030 2540081
Cell. +39 348 2814608

Progetto

**COMPLESSO COMMERCIALE
Via Bose - Brescia**

Titolo

**PROGETTO ESECUTIVO OPERE
DI URBANIZZAZIONE**

**PLANIMETRIE FASI DI
CANTIERIZZAZIONE**

Documento

serie P.C.

Tavola

PdC.PE UNICA

Data

Agosto 2015

Scala

-

Disegnato da

arch.Paola Scalvini

Revisione

R0








Nome file

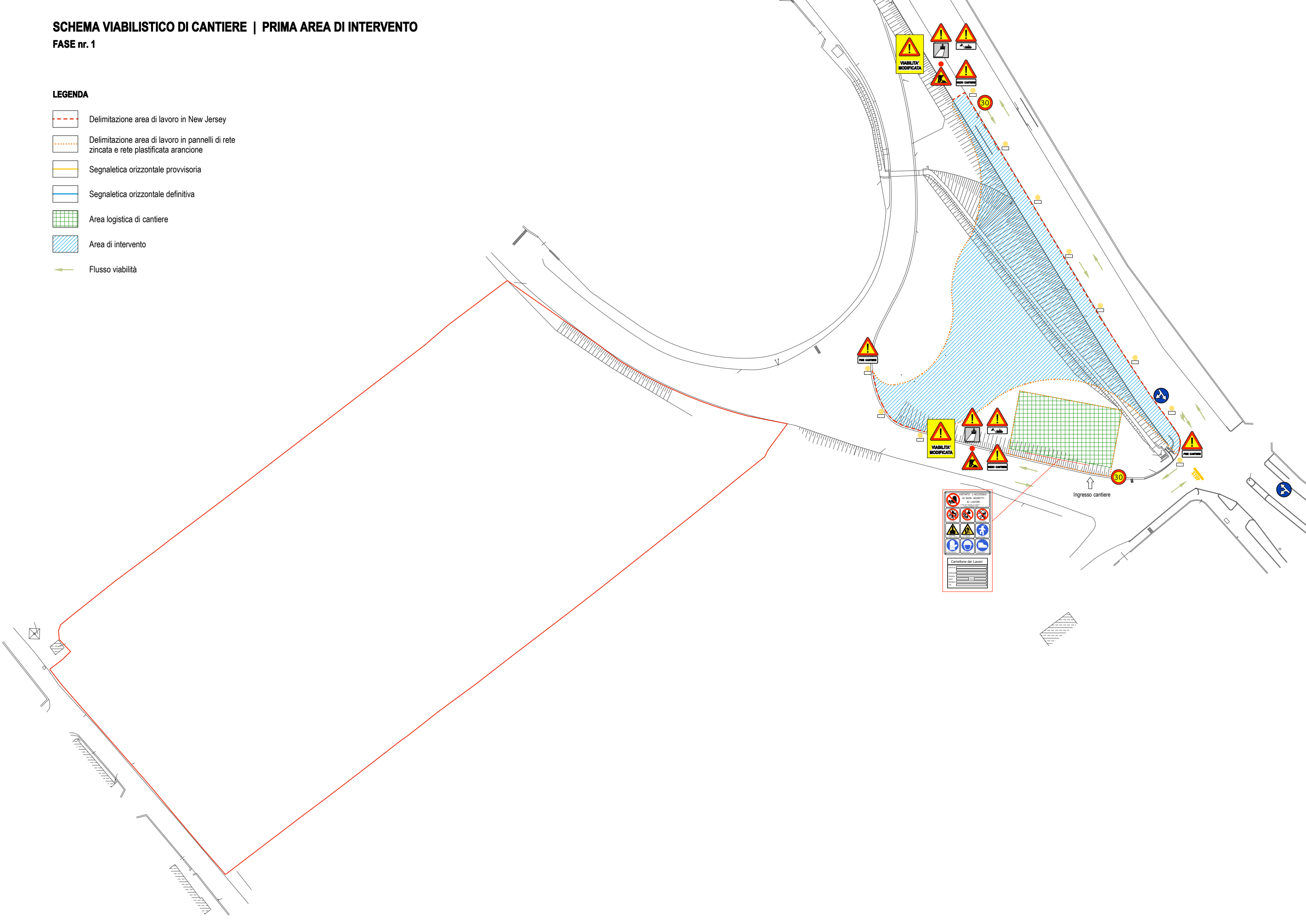
161_PdC_PE_Fasi
cantierizzazione

SCHEMA VIABILISTICO DI CANTIERE | PRIMA AREA DI INTERVENTO

FASE nr. 1

LEGENDA








-  Delimitazione area di lavoro in New Jersey
-  Delimitazione area di lavoro in pannelli di rete zincata e rete plastificata arancione
-  Segnaletica orizzontale provvisoria
-  Segnaletica orizzontale definitiva
-  Area logistica di cantiere
-  Area di intervento
-  Flusso viabilità

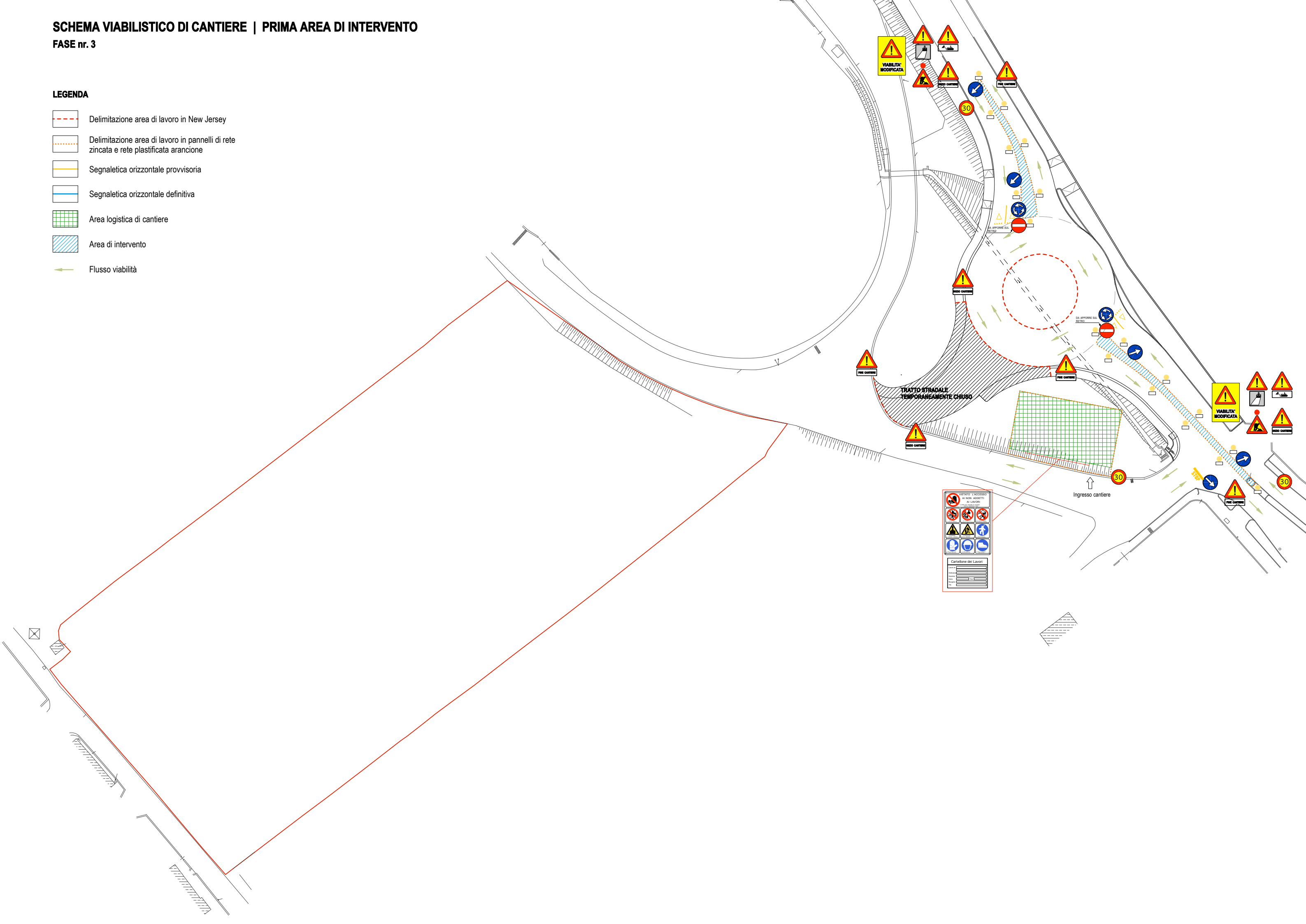


SCHEMA VIABILISTICO DI CANTIERE | PRIMA AREA DI INTERVENTO

FASE nr. 3

LEGENDA








-  Delimitazione area di lavoro in New Jersey
-  Delimitazione area di lavoro in pannelli di rete zincata e rete plastificata arancione
-  Segnaletica orizzontale provvisoria
-  Segnaletica orizzontale definitiva
-  Area logistica di cantiere
-  Area di intervento
-  Flusso viabilità

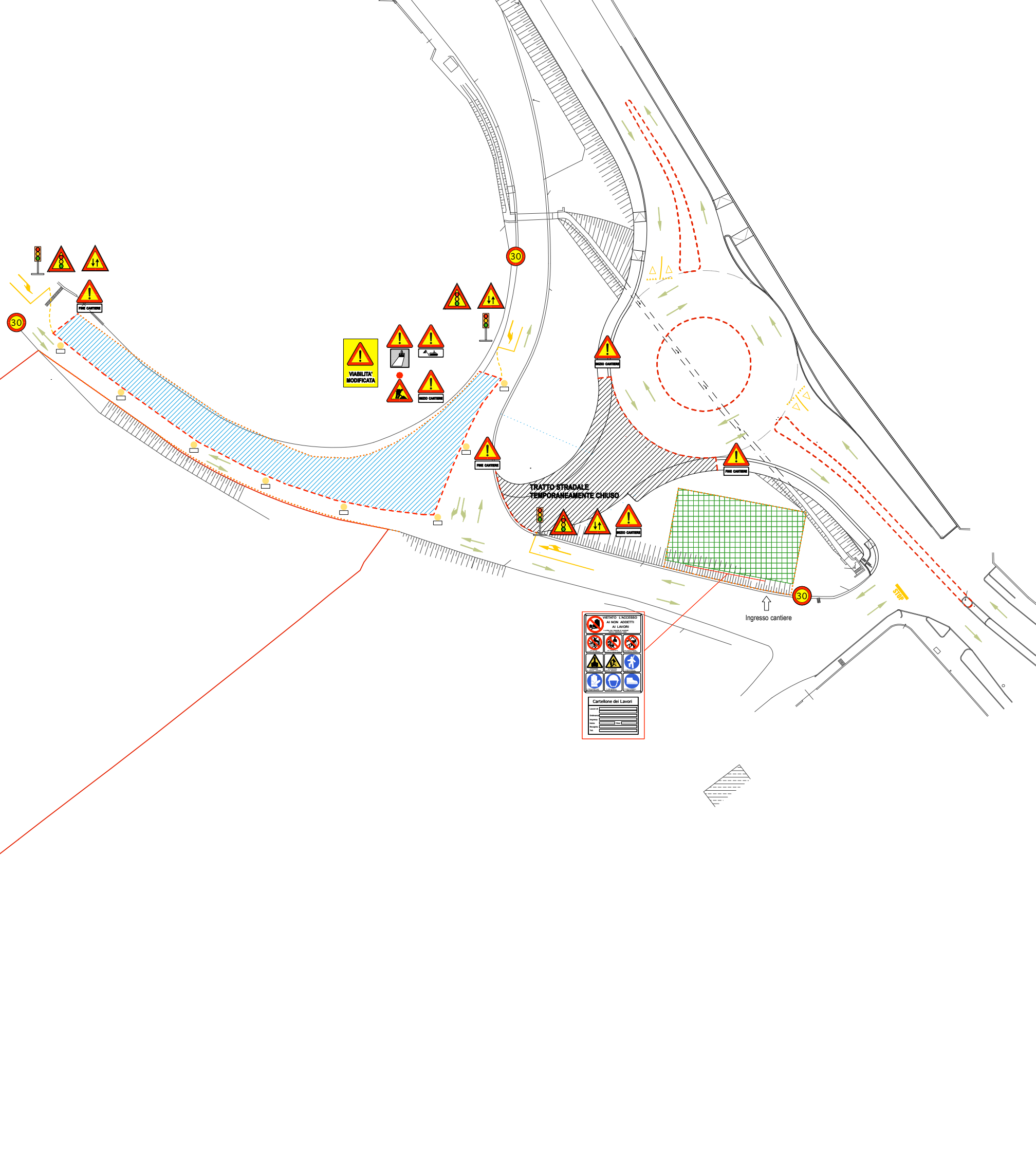


SCHEMA VIABILISTICO DI CANTIERE | SECONDA AREA DI INTERVENTO

FASE nr. 4

LEGENDA








-  Delimitazione area di lavoro in New Jersey
-  Delimitazione area di lavoro in pannelli di rete zincata e rete plastificata arancione
-  Segnaletica orizzontale provvisoria
-  Segnaletica orizzontale definitiva
-  Area logistica di cantiere
-  Area di intervento
-  Flusso viabilità

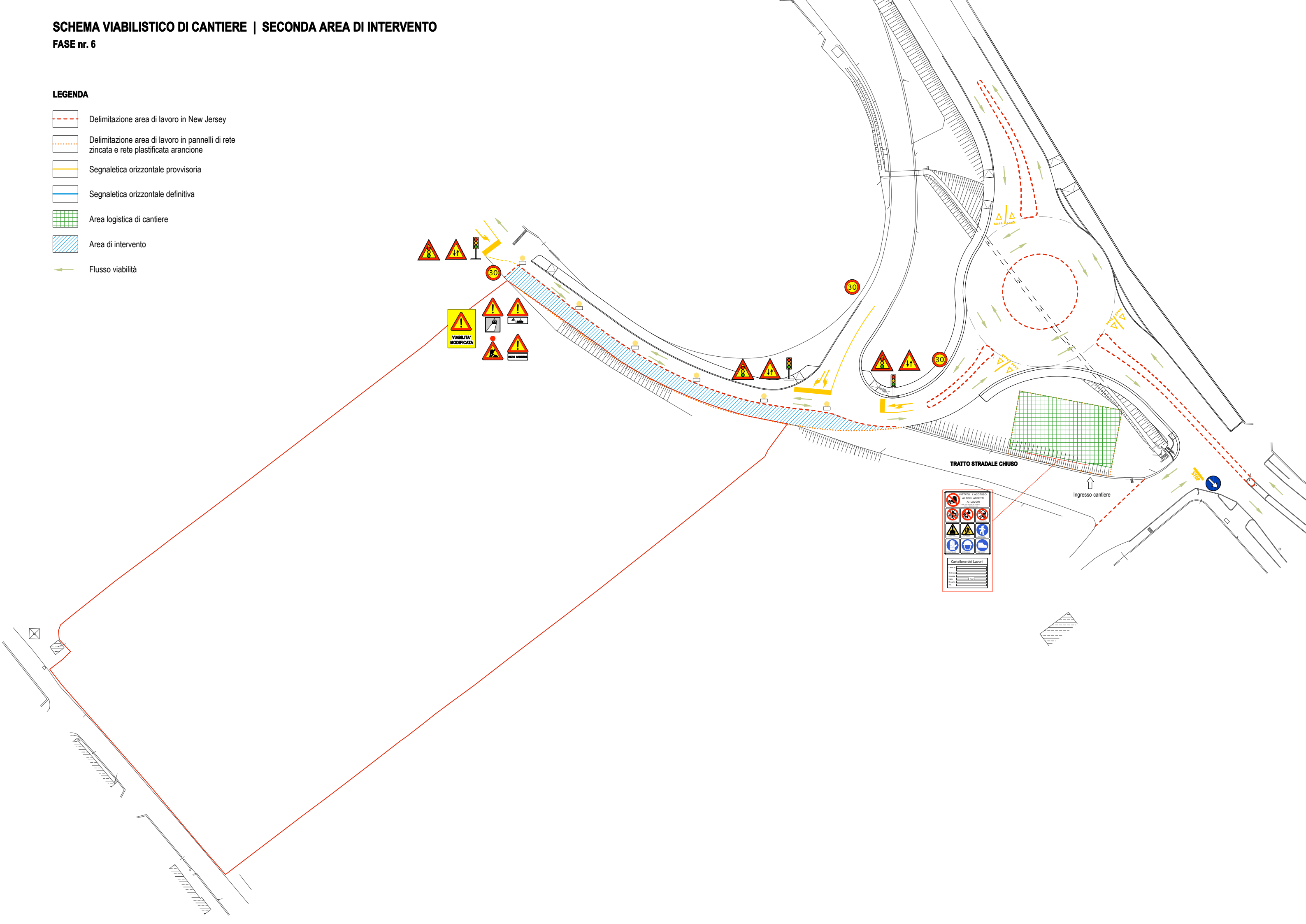


SCHEMA VIABILISTICO DI CANTIERE | SECONDA AREA DI INTERVENTO

FASE nr. 6

LEGENDA








-  Delimitazione area di lavoro in New Jersey
-  Delimitazione area di lavoro in pannelli di rete zincata e rete plastificata arancione
-  Segnaletica orizzontale provvisoria
-  Segnaletica orizzontale definitiva
-  Area logistica di cantiere
-  Area di intervento
-  Flusso viabilità

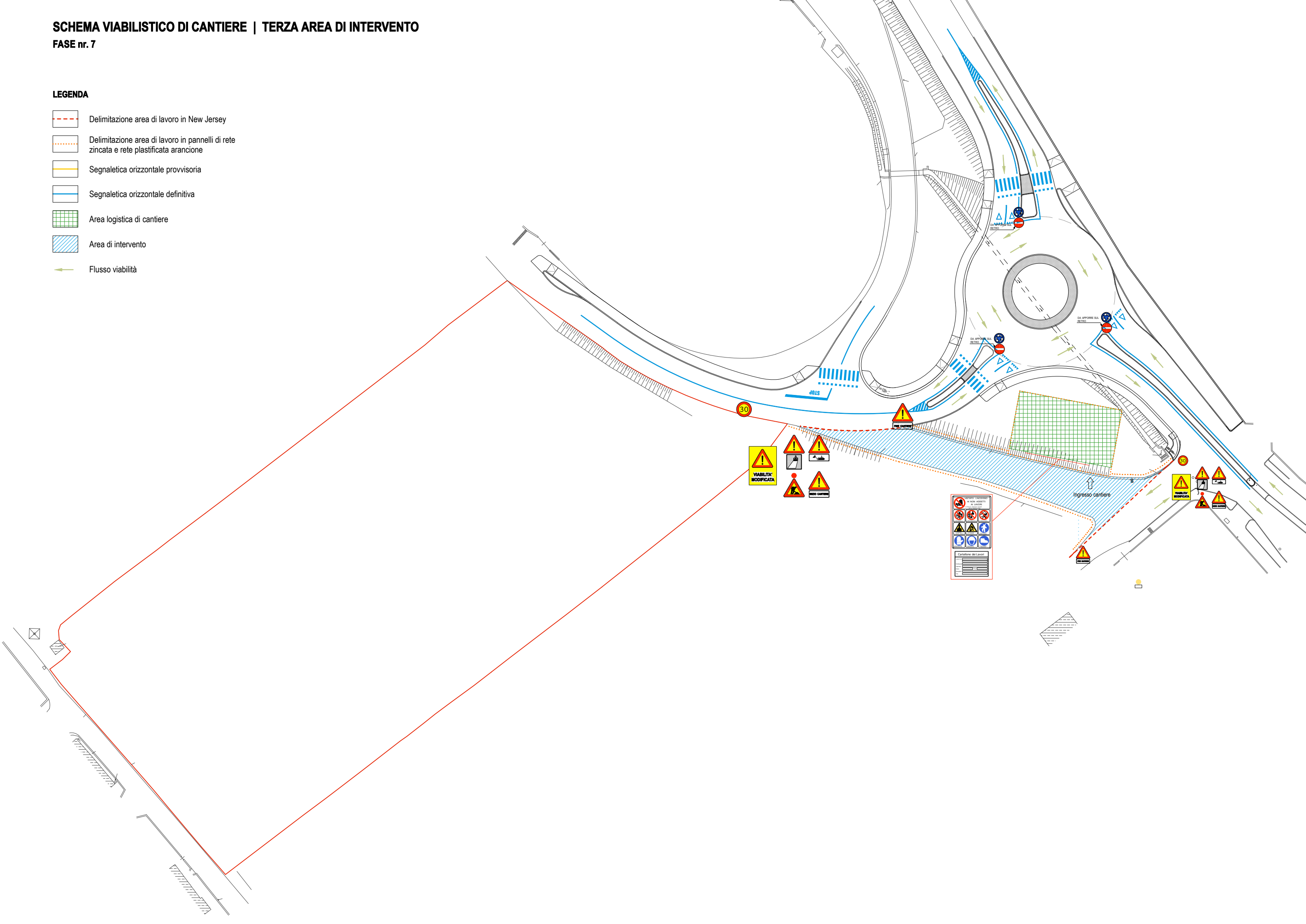


SCHEMA VIABILISTICO DI CANTIERE | TERZA AREA DI INTERVENTO

FASE nr. 7

LEGENDA

-  Delimitazione area di lavoro in New Jersey
-  Delimitazione area di lavoro in pannelli di rete zincata e rete plastificata arancione
-  Segnaletica orizzontale provvisoria
-  Segnaletica orizzontale definitiva
-  Area logistica di cantiere
-  Area di intervento
-  Flusso viabilità

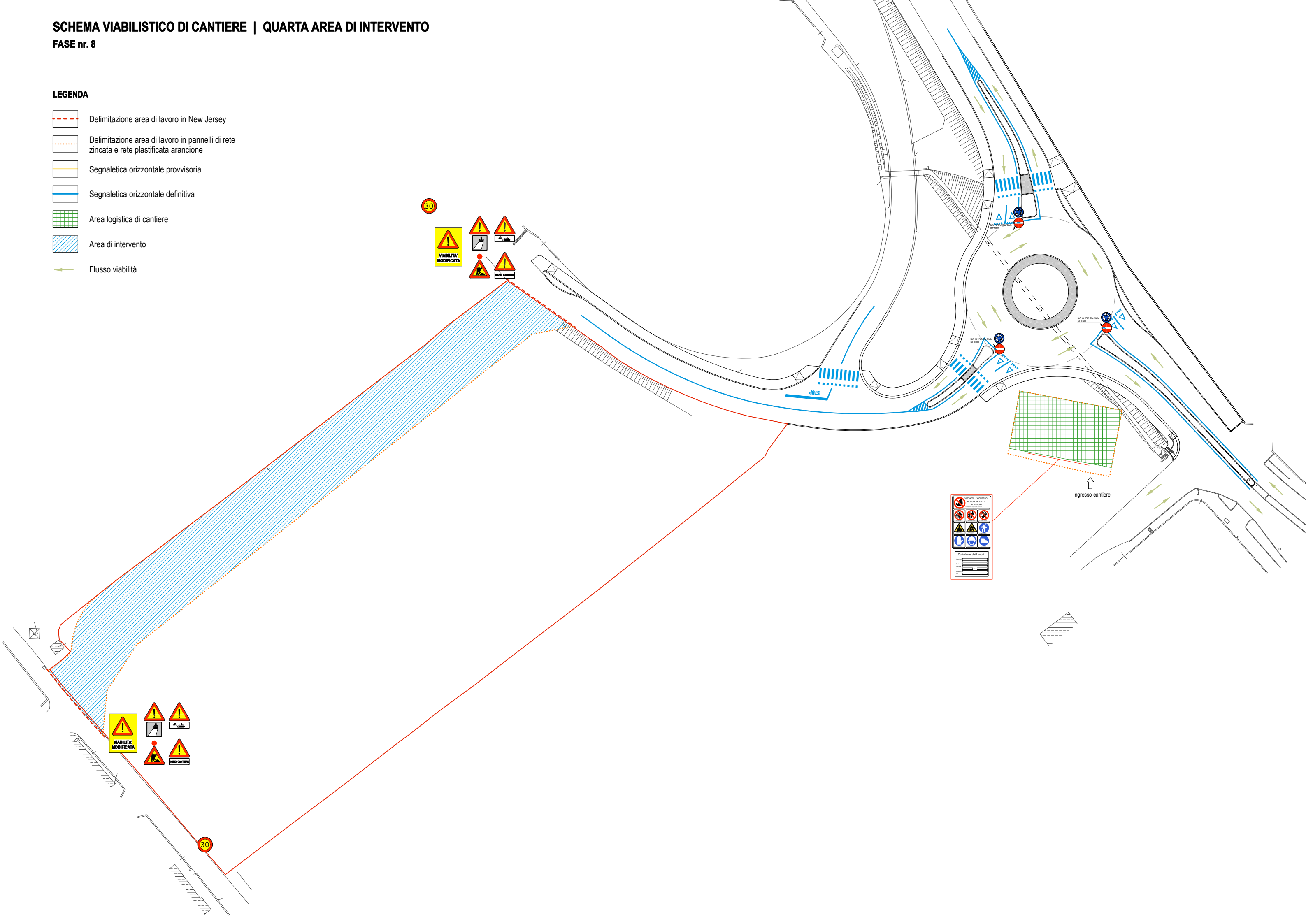


SCHEMA VIABILISTICO DI CANTIERE | QUARTA AREA DI INTERVENTO

FASE nr. 8

LEGENDA

- Delimitazione area di lavoro in New Jersey
- Delimitazione area di lavoro in pannelli di rete zincata e rete plastificata arancione
- Segnaletica orizzontale provvisoria
- Segnaletica orizzontale definitiva
- Area logistica di cantiere
- Area di intervento
- Flusso viabilità



SCHEMA VIABILISTICO DI CANTIERE

FASE nr. 9

LEGENDA

- Delimitazione area di lavoro in New Jersey
- Delimitazione area di lavoro in pannelli di rete zincata e rete plastificata arancione
- Segnaletica orizzontale provvisoria
- Segnaletica orizzontale definitiva
- Area logistica di cantiere
- Area di intervento
- Flusso viabilità

