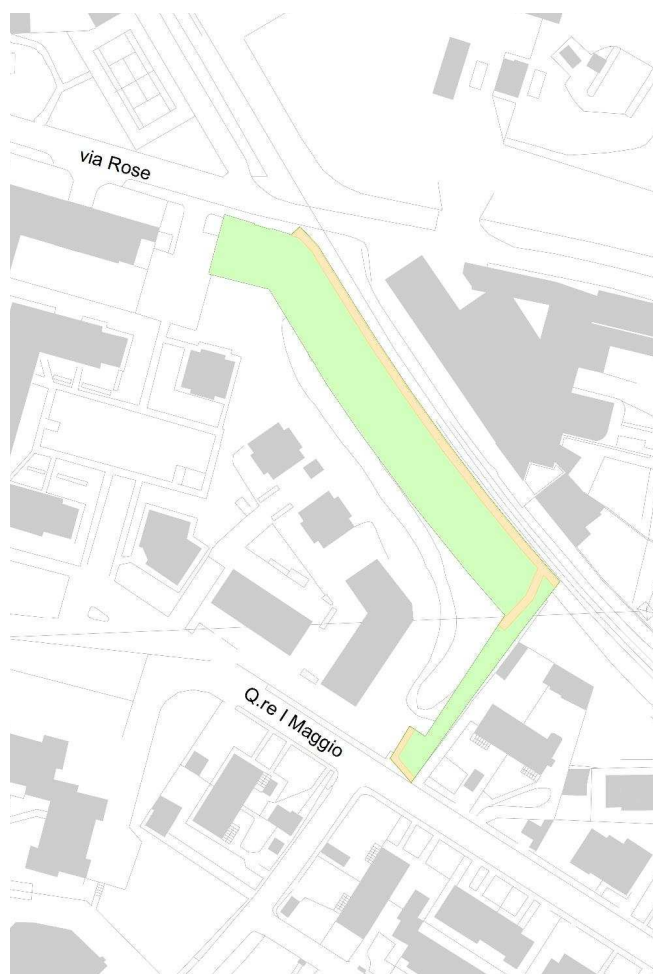


Concentrazioni PCB e metalli pesanti Parco Via Rose

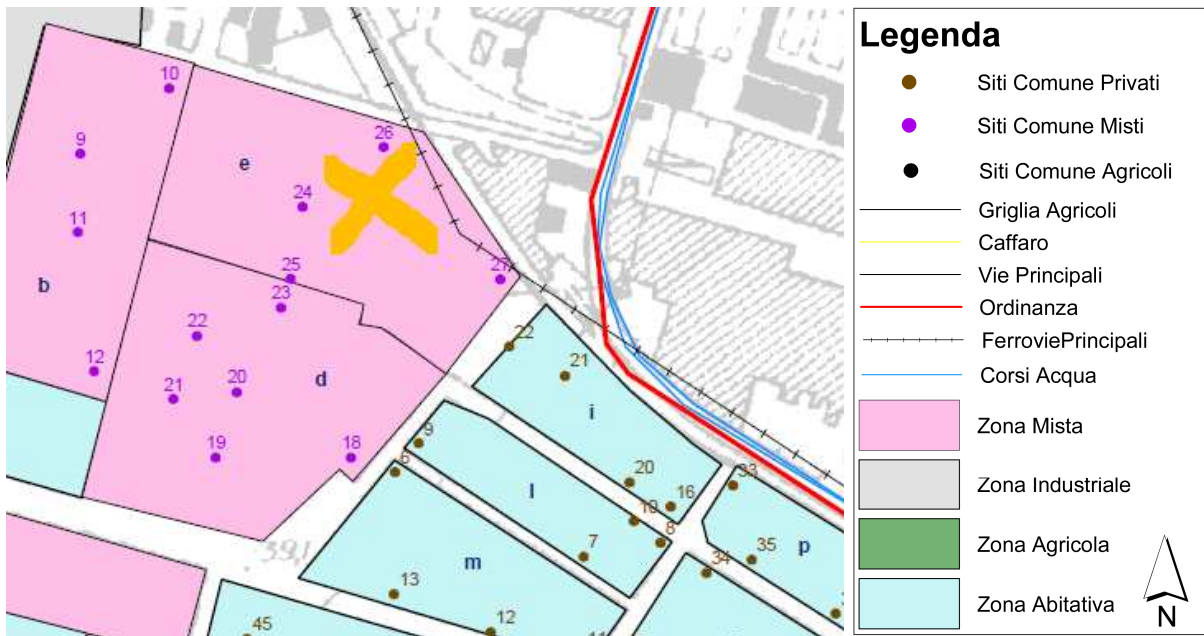
Dati generali:

| | |
|----------------------------------|-----------------|
| Superficie prato: | mq 2.100 |
| Superficie pavimentata: | mq 300 |
| Tipologia pavimentazione: | asfalto |
| Area giochi: | no |
| Impianto irrigazione: | no |

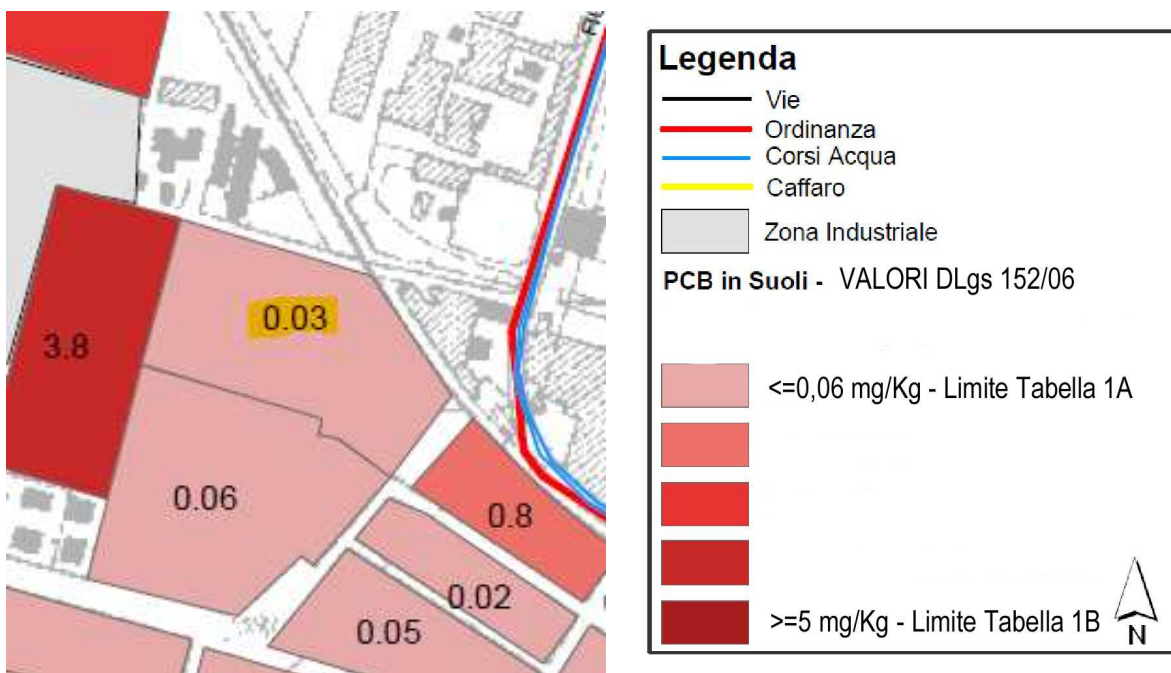
PARCO VIA ROSE



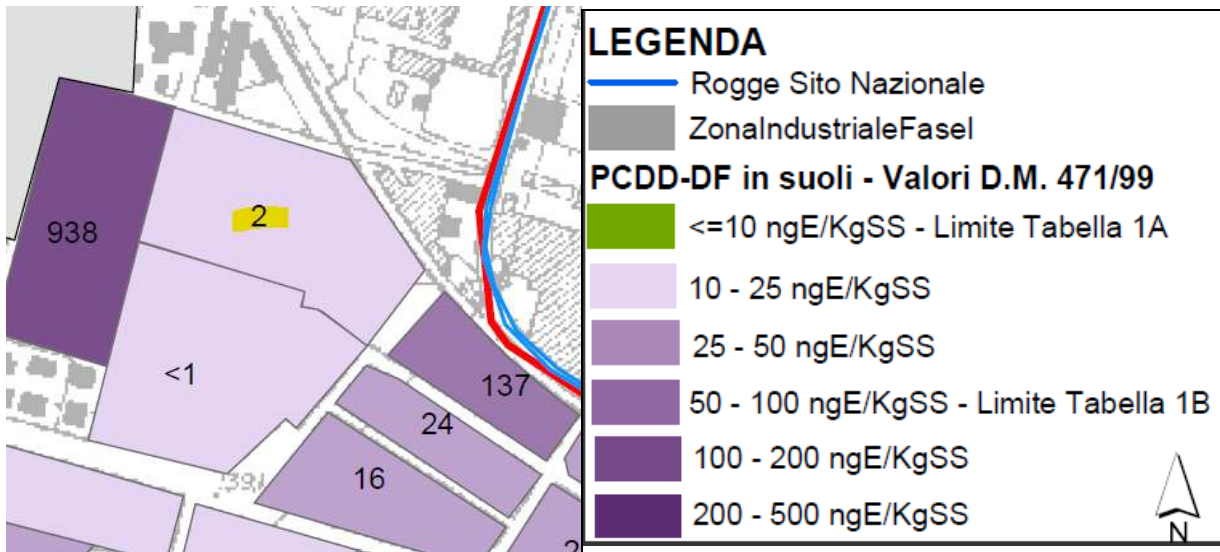
Campionatura



Concentrazione PCB



Concentrazione PCDD-DF



Concentrazione Mercurio

